

► CORE MRO PRODUCT INTRODUCTION

LOCTITE PC 7218 (NORDBAK WEARING COMPOUND)

- Ceramic -filled for outstanding resistance to abrasion
- Renews worn surfaces fast - reduces downtime
- Extends wear life-resists sliding abrasive wear
- Non sag - provides abrasion resistance on over-head and vertical surfaces
- High Temperature NWC (PC 7230) => 232°C
- Ultra High Temperature NWC (PC 7303) => 288°C
- High Impact Wearing Compound (PC 9313)
- Fast Cure Wearing Compound (PC 9599)
- Fast Cure High Impact Wearing Compound (PC 9593)
- Small ceramic bid => PC 7226 Loctite Pneu Wear
- Fine ceramic bid => PC 7332 Silicone Carbide Pneu Wear



► CORE MRO PRODUCT INTRODUCTION

LOCTITE PC 7218 (NORDBAK WEARING COMPOUND)



► CORE MRO PRODUCT INTRODUCTION

LOCTITE PC 7218 (NORDBAK WEARING COMPOUND)



► CORE MRO PRODUCT INTRODUCTION

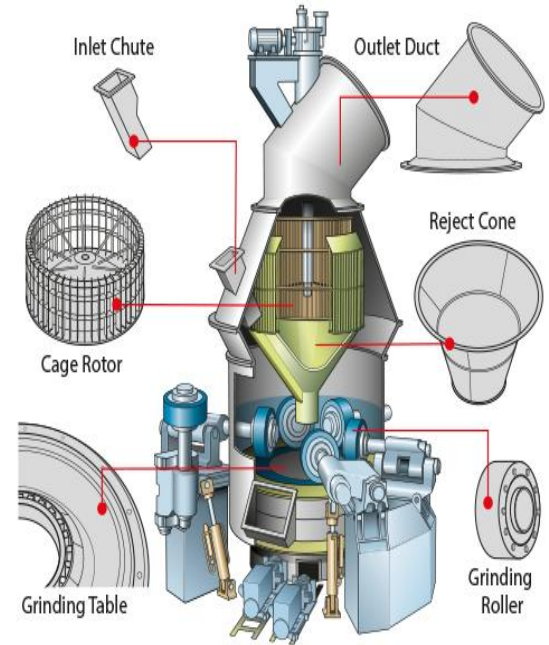
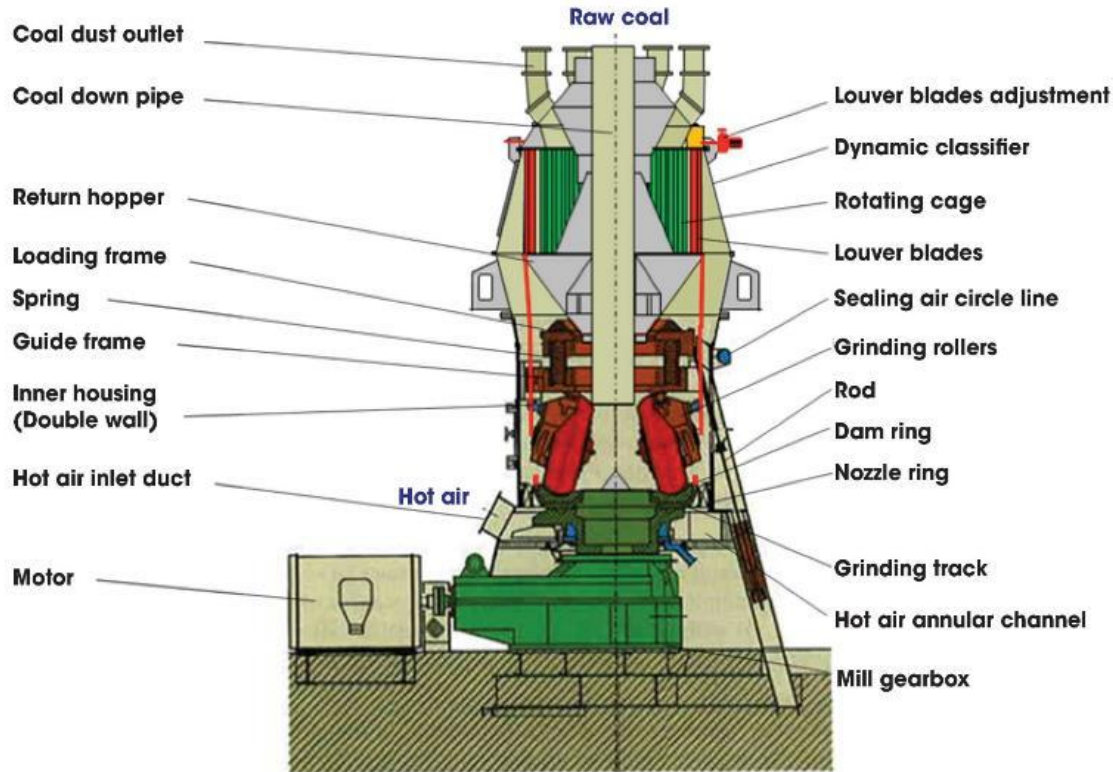
LOCTITE PC 7218 (NORDBAK WEARING COMPOUND)

Application on Equipment:

1. Pulverizer/ Vertical Roll Mills (@Coal Fired - Power Plants, Cement Plants)
2. Ball Mills (Mining)

► CORE MRO PRODUCT INTRODUCTION

LOCTITE PC 7218 (@PULVERIZER/VRM)



► CORE MRO PRODUCT INTRODUCTION

LOCTITE PC 7218 (@PULVERIZER POWER PLANT)



TTP

Technical Training Professionals

www.tectrapro.com

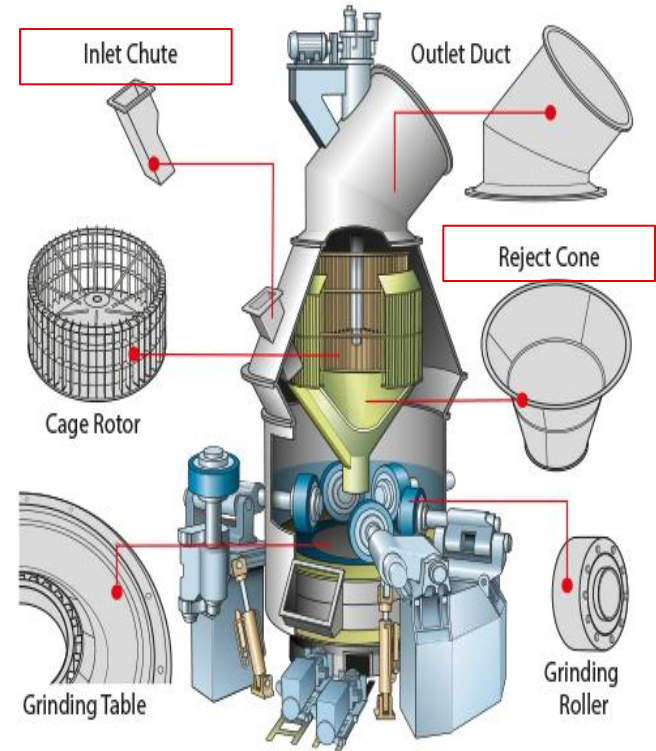
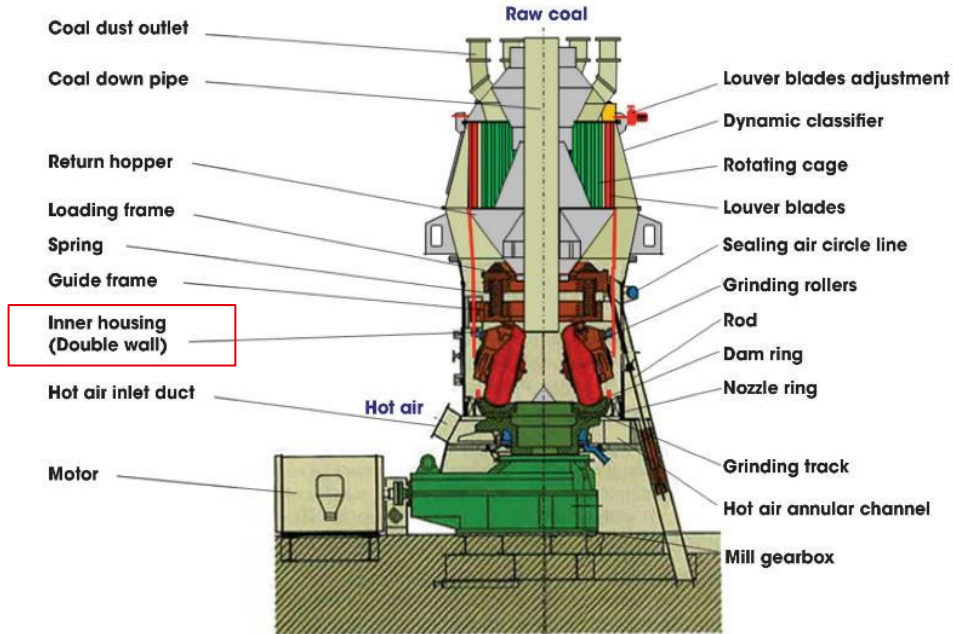
► CORE MRO PRODUCT INTRODUCTION

LOCTITE PC 7218 (@PULVERIZER/VRM CEMENT PLANT)



► CORE MRO PRODUCT INTRODUCTION

LOCTITE PC 7218 (@PULVERIZER/VRM)



► CORE MRO PRODUCT INTRODUCTION

LOCTITE PC 7218 (ACH'S)

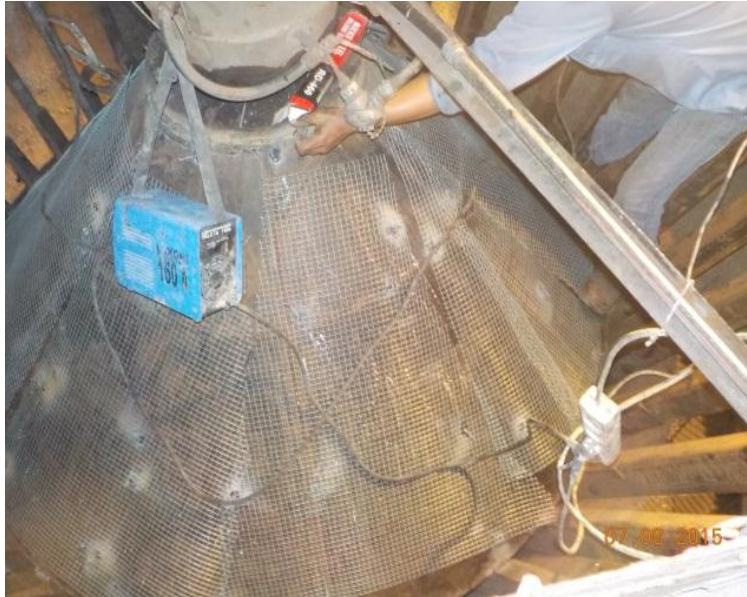
- Customer / Country
 - Cement @Gresik/ Indonesia
- Applicator
 - PT. Mahakarya Adi Swakarsa
- Problem / Application
 - Abrasion at Classifier Cone & Bar
 - Protective coating of surfaces.
- Solution
 - Loctite PC 7218, PC 7227
- Benefits
 - Longer life time
 - Reduce downtime



► CORE MRO PRODUCT INTRODUCTION

LOCTITE PC 7218 (ACH'S)

**In Process
Application**



**After
Application**



► CORE MRO PRODUCT INTRODUCTION

LOCTITE PC 7218 (ACH'S)

- Customer / Country
 - Cement Plant@Gresik/Indonesia
- Applicator
 - PT. Mahakarya Adi Swakarsa
- Problem / Application
 - Abrasion at inlet pipe and chute
- Solution
 - Loctite PC 7218, PC 7227
- Benefits
 - Longer life time
 - Reduce downtime



► CORE MRO PRODUCT INTRODUCTION

LOCTITE PC 7218 (ACH'S)

**In Process
Application**



**After
Application**



► CORE MRO PRODUCT INTRODUCTION

LOCTITE PC 7218 (ACH'S)

- **Customer / Country**
 - Power Plant/ Indonesia
- **Problem / Application**
 - Peel off ceramic tile
 - Abrasion on inner wall pulverizer
- **Solution**
 - Loctite PC 7218, PC 7227
- **Benefits**
 - Protection from abrasion because of coal ash
 - Extend the life of the Inner Wall Pulverizer



► CORE MRO PRODUCT INTRODUCTION LOCTITE PC 7218 (ACH'S)

Before Application



After Application



► CORE MRO PRODUCT INTRODUCTION

LOCTITE PC 7218 (ACH'S)

After 3400 working hours



► CORE MRO PRODUCT INTRODUCTION

LOCTITE PC 7218 (@BALL MILLS)



A **ball mill** is a type of grinder used to grind or blend materials for use in mineral dressing processes, paints, pyrotechnics, ceramics, and selective laser sintering.



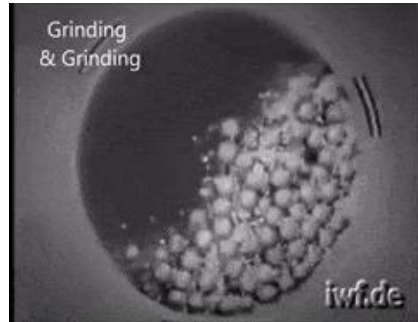
It works on the principle of impact and attrition: size reduction is done by impact as the balls drop from near the top of the shell.

► CORE MRO PRODUCT INTRODUCTION

LOCTITE PC 7218 (@BALL MILLS)



The grinding media are the balls, which may be made of steel (chrome steel), stainless steel, ceramic, or rubber.

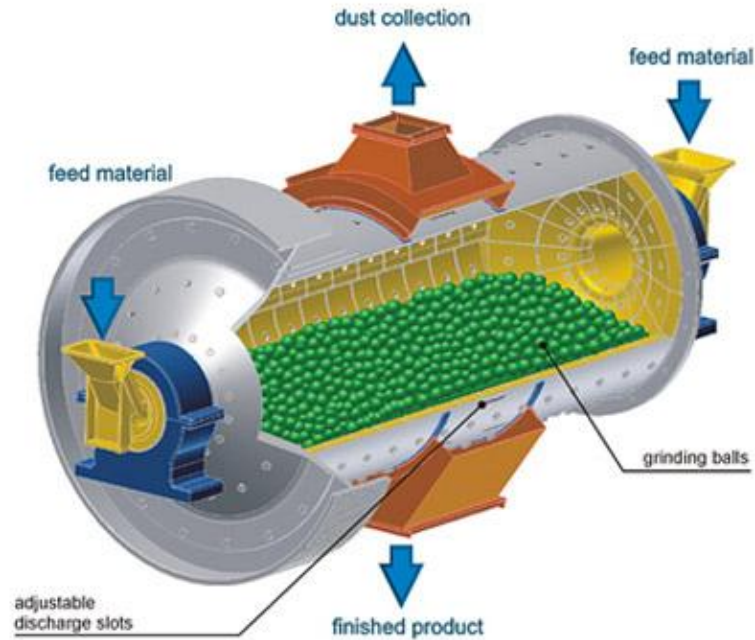


The inner surface of the cylindrical shell is usually lined with an abrasion-resistant material such as manganese steel or rubber lining.

Less wear takes place in rubber lined mills. The length of the mill is approximately equal to its diameter.

► CORE MRO PRODUCT INTRODUCTION

LOCTITE PC 7218 (@BALL MILLS)



► CORE MRO PRODUCT INTRODUCTION

LOCTITE PC 7218 (ACH'S)

- Customer / Country
 - Gold Mining / Indonesia
- Applicator
 - PT. Supra Bakti Mandiri
- Problem / Application
 - Abrasion at Hopper Finished Product area
- Solution
 - Loctite PC 7218, PC 7227
- Benefits
 - Longer lifetime
 - Reduce downtime



► CORE MRO PRODUCT INTRODUCTION

LOCTITE PC 7218 (ACH'S)

- Customer / Country
 - Gold Mining/ Indonesia
- Applicator
 - PT. Supra Bakti Mandiri
- Problem / Application
 - Abrasion at Trommel Screen Bolts
- Solution
 - Loctite PC 7218
- Benefits
 - Longer lifetime
 - Reduce downtime



► CORE MRO PRODUCT INTRODUCTION

LOCTITE PC 7218 (ACH'S)

- **Customer / Country**
 - Steel Plant/ Indonesia
- **Problem / Application**
 - Abrasion to Slurry Pipe Blast Furnace
 - Protective coating of Inside of Pipe
- **Solution**
 - Loctite PC 7226
- **Benefits**
 - Longer lifetime of Slurry Pipe.



► CORE MRO PRODUCT INTRODUCTION

LOCTITE PC 7218 (ACH'S)

- **Customer**
 - Brick Factory/ Indonesia
- **Problem / Application**
 - Abrasion to Mixing Blade
 - Protective coating of Mixing Blade Plate
- **Solution**
 - Loctite PC 7226
- **Benefits**
 - Longer lifetime of Mixing Blade.



► CORE MRO PRODUCT INTRODUCTION

LOCTITE PC 7218 (ACH'S)

- **Customer / Country**
 - Steel Plant/ Indonesia
- **Problem / Application**
 - Abrasion to Dust Pump
 - Protective coating of Inside Component.
- **Solution**
 - Loctite PC 7226 + Brushable Ceramic Grey
- **Benefits**
 - Longer lifetime of Dust Pump

